

# Storm DP Single-Voltage Dehumidifier



## APPLICATION

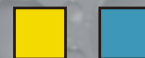
Storm DP Commercial dehumidifier has super stable and durable dehumidification performance but Only can work in (110-120) single-voltage environment. New generation surface scratch resistance polyethylene shell 25% more than the previous generation. The all-new rotating shell design is easy to maintain and allows for easy access to all components. Telescopic handles and rubber tires allow for units to be stacked together for both storage and easy transportation. With the new design and layout of the machine, the volume of the whole machine is 40% smaller than others on the market. Simplified user controls include a large LCD display and APP control. The App can control the dehumidifier remotely anytime and anywhere, thus trips to the site to check up can be eliminated.

The Storm DP dual-voltage dehumidifier passed the professional testing and feedback has been that we have created an amazing machine.

The Storm DP, for the size, has an extremely high water dehumidification capacity which makes the machine an excellent choice for restoration needs for BOTH site and domestic uses. Humidity levels are constantly checked via the digital humidistat. Lightweight, easy to maneuver, and robust the unit ideal for almost all applications. It is the best choice for all emergency after-flood restoration tasks for dampness removal and early prevention of mold growth. Its wide range of applications include the Hire Industry, Building Industry, Plasterers, Flood & Restoration, Carpet Cleaning, Tradesmen, etc... or anywhere you need to extract moisture at a professional level.



Outer shell colour options are available-please ask.



## FEATURES

- ✓ cETL Certified
- ✓ Smart Wi-Fi & APP control
- ✓ Single-Voltage, 110-120 voltage operation
- ✓ Easy clean – shell can be opened to access all components
- ✓ Easy to store wires and hoses
- ✓ Built-in Condensate Pump
- ✓ Environmental R410A Refrigerant
- ✓ Sturdy handle-Large Diameter Wheels
- ✓ Microchannel Cold a Heat Exchanger
- ✓ Rotational Molded Body
- ✓ Superior Stacking
- ✓ Rotary Compressor
- ✓ Ducting Options
- ✓ Water-Full Protection
- ✓ Automatic Humidistat Control
- ✓ Quick Connection to Cable/Hose
- ✓ Memory Starting
- ✓ MERV-8 Filter
- ✓ Low Temperature

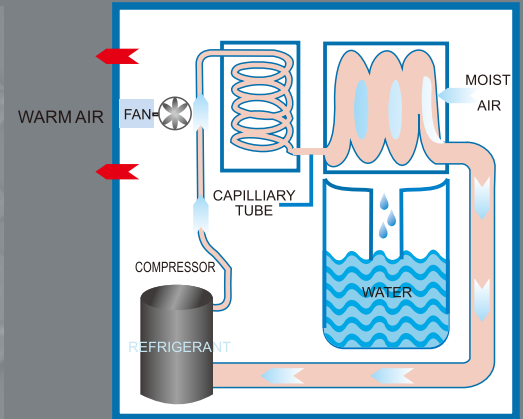
## SPECIFICATIONS

**Power:** 110-120 V/60Hz, 4A  
**Size For:** Up to 1300 sq.ft  
**Filter:** MERV - 8 Filter  
**Airflow:** 210 CFM, 350 CMH  
**Sound Pressure Level:** < 58 dBA  
**Refrigerant:** R410A  
**Wheel:** 2 Wheels  
**Draining:** Condensate Pump  
**Functioning Temperature Range:** 33.8~110°F  
**Functioning Humidity Range:** 25~80%  
**Water Removal (Max):** 110 Pints/Day @90°F, 90%  
**Water Removal (AHAM):** 50 Pints/Day @80°F, 60%  
**Weight:** 58 lbs  
**Dim (L×W H):** 17x 14x 23.1in  
**Loading quantity:** 20": 171 Sets; 40": 378 Sets;  
40" HQ : 540 Sets

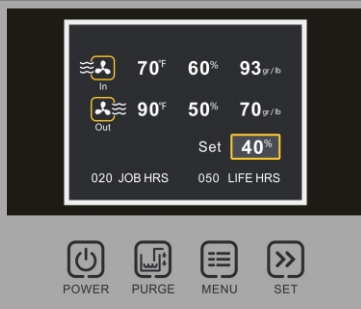
**HIGH CAPACITY, COMPACT, LOW TEMPERATURE DEHUMIDIFIERS FOR PROFESSIONAL USES, WATER DAMAGE CONTROL FOR SITE & HIRE INDUSTRY**

## WHY DEHUMIDIFY?

- To reduce the relative humidity to a safer level which prevent household items, food, medicine, and books get moldy.
- To reduce the relative humidity to a safer level which protect household appliances, computers, cameras and other instruments from moisture damage.
- To reduce the relative humidity to a safer level which prevent the long-term humidity of the crawl space or basement from generating moisture in the wood of the house structure to cause rot and damage.
- To reduce the relative humidity to a safer level which let the house stay away from pest infestation.
- To reduce the relative humidity to a safer level which avoid excessive humidity in a space where it's easy for mold, mildew, and fungus to thrive.



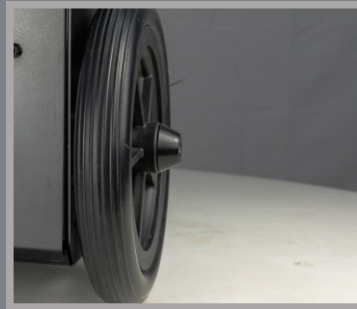
## What Makes Us Great?



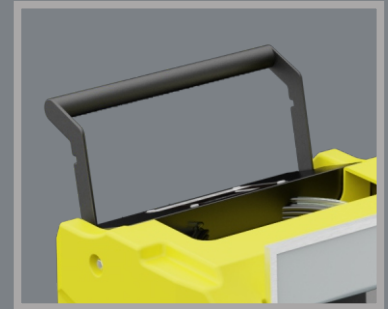
**LCD Display**



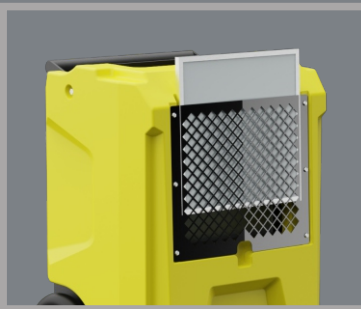
**Wi-Fi/APP**



**Large Diameter Wheels**



**Sturdy handle**



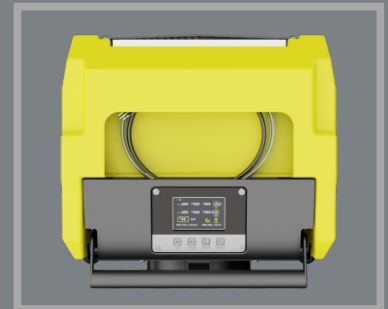
**Easy Filter Access**



**Superior Stacking**



**Easy access to all components**



**Cord and Hose Storage**

This is a very compact dehumidifier ever produced for drying restoration while it has a portable design for easy transport. Its stackable design not only saves flood restorer more space, but also allows more number of the machines to be transported to the destinations for after-flood restoration tasks.

As for the tough environment that flood disasters might have, Storm DP is designedly built with rugged rotomolded housing which is of high-quality industrial material. It is durable enough to withstand severe collision and corrosion found in water damage restoration and construction.

As the unique design compared with others, we provide a humidity sensor in bypass air design which makes the short-cycling go away for repairing the pump and main board quickly. Since customers can do it by themselves, service become easy. Pre-assembly makes the installation process simple, thereby reducing the overall installation and project cost.

Storm DP is leading the industry by introducing Rare earth alloy Tube Evaporator. This new feature will extend the life of the coils, provide protection in corrosive environments and maintain the coil's heat transfer ability over the life of the coil.